

# Guide on the welcome support pack for visiting Japan

For new visitors coming to Japan, we offer a welcome support pack for all of you.

We accept reservations and arrangements for all of the following services before you come to Japan.

By cooperating with our affiliated companies, we can guide you smoothly, while eliminating the hassle of individual arrangements and responding to urgent requests.



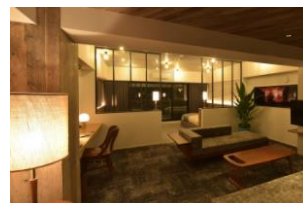
## Hotel Arrangement

We can arrange for you a 14-day stay at a partner hotel during the voluntary quarantine period.

Please check in advance since the hotel prices are displayed as partner special prices.

In addition to the hotels listed below, we are also able to provide information on 300 rooms in 15 facilities.

Please contact us for the reservation flow and details.



Hotel name	Nearest station	On foot	Number of rooms	One night cost
Hotel Rose Garden	Shinjuku	10min	142	From 3,500yen~
Hotel Wing International Shinbashi Onarimon	Shinbashi	10min	95	From 3,900yen~
Comfort Hotel Tokyo Higashi Kanda(Breakfast included)	Bakurocho	4min	138	From 3,500yen~



## Hire Service

Since it is not permitted by Japanese government to move from the airport to the isolated accommodation by public transportation, we will pick you up by our affiliated hire service. And if there're 3 or more of you could sharing one car, it will cost 11,000 yen / person.

If there's only a person or two, the hire service is also available, but please be aware that the price will change.



For 3 or more people sharing one car:

Narita Airport: 11,000yen/person

Haneda Airport: 11,000yen/person



For less than 2 people:

Narita Airport: 27,500yen/person

Haneda Airport: 16,500yen/person



## Share House

You are able to choose your favorite property from 700 rooms in 40 buildings operated by us BeGoodJapan.

Please feel free to contact us as we can accept orders from one month earlier.

Since there are many aspects that you may not be able to understand during your first stay, we are happy to receive direct contact from you regarding commuting to work or school etc.

※We have English and Chinese speaking staff, feel free to ask!

